



Model S288

Specification:

Gas medium duty range with (2) space saver ovens 48" (1219mm) wide (8) open top Starfire burners with extra heavy duty cast iron tops and ring grates. Stainless steel 10" (254mm) high back guard with slotted black enameled cap. Available with optional hot top(s) and/or griddle. Available with convection oven base.



NOTE: CE certification applies only to models with prefix "T" -see Optional Features

Standard Features:

- Flame failure and spark ignition on all concealed burners
- Extra heavy duty cast iron top, and ring grates
- Stainless steel exterior
- 24,000 BTU/7.03 kW (natural gas) Starfire burners (4) or 20,000 BTU/5.86 kW (propane gas) Starfire burners
- 25,000 BTU/7.32 kW race track even heat oven burners
- Heavy duty "FDO" oven thermostats accurate to $\pm 10^{\circ}\text{F}$ ($\pm 5^{\circ}\text{C}$) temperature range 150°F-500°F (66°C-260°C)
- Two space saver ovens; fully porcelain interior which includes oven bottom, top, rear, embossed sides, and inside door liner.
- Removable nickel plated four position oven rack guides
- Nickel plated oven rack, (one per oven)
- 10" (254mm) high stainless steel back guard with slotted black enameled angled cap
- 6" (152mm) high, chrome steel legs w/adjustable feet
- Gas regulator
- No visible screw fixings
- One year limited warranty on parts and labor (USA & Canada only)

Optional Features:

- ☐ Heavy duty, 5/8" (16mm) griddle plates available in the following widths - 12" (305mm), 24" (610mm), 36" (914mm) & 48" (1219mm) standard on RHS, optional on LHS
- ☐ Hot tops 3/8" (10mm) thick-standard on LHS, optional on RHS
- ☐ Sentry safety, protection to open burners (add prefix T i.e. ST288)
- ☐ Electric spark ignition - add suffix E (i.e. S286E) requires single phase 115v, 60Hz, 240v, 50Hz electrical connection
- ☐ Additional oven rack
- ☐ Stainless steel backguard and plate shelf
- ☐ 17" (432mm) high stainless steel backguard
- ☐ Stainless steel main back
- ☐ 6" (152mm) stainless steel legs
- ☐ Casters

NOTE: Ranges supplied with casters must be installed with an approved restraining device.


GARLAND®

Item #: _____

Model: S288

 Product Name: 48" Starfire Sentry Series
Gas Range

Input Rating Per Burner (Natural Gas)								Operating Pressure			
Open*		Hot Top**		Griddle***		Oven burner		Natural		Propane	
BTU	kW	BTU	kW	BTU	kW	BTU	kW	"WC	mbar	"WC	mbar
24,000	7.03 ea	18,000	5.27	18,000	5.27	25,000	7.32	4.5	11.2	10.0	24.9

Gas input ratings shown for installations up to 2000 ft., (610m), above sea level. Please specify altitudes over 2000 ft.

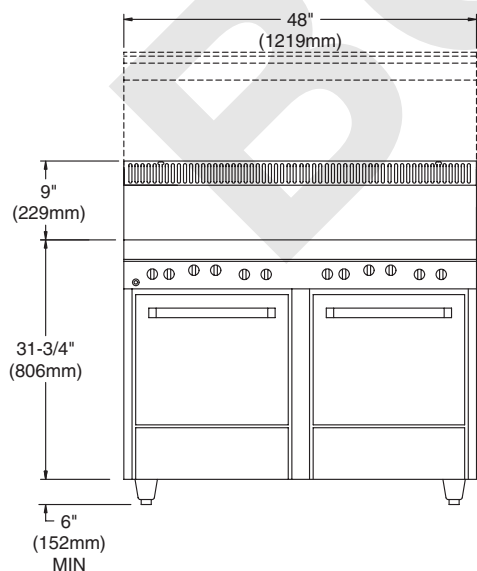
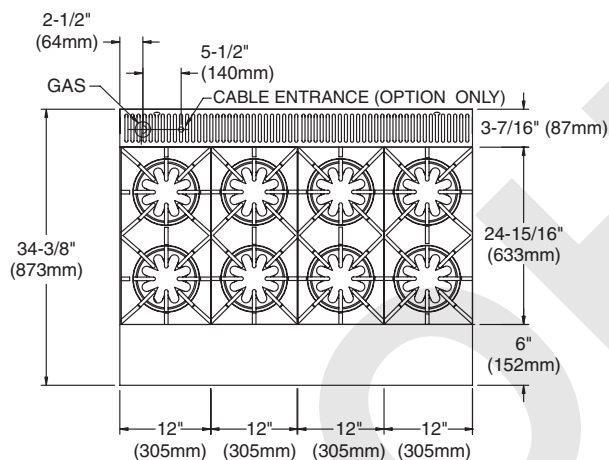
Please specify gas type when ordering.

* Two (2) burners per 12"(305mm) section, (rated at 20,000BTU/5.86kW with Propane)

** One (1) burner per optional 12"(305mm) section, (replaces 2 open burners); add suffix: -1, -2, or -3 standard on left

*** One (1) burner per 12" (305mm) of optional griddle width, (replaces 2 open burners); add suffix:-12G, 24G, 36G or 48G, standard on right

Exterior Dimensions			Oven Interior Dimensions		
Height	Width	Depth	Height	Width	Depth
46-3/4" (1145mm)	48" (1219mm)	33" (838mm)	13-1/2" (343mm)	20-1/4" (514mm)	22" (559mm)



NOTE: NOT AVAILABLE FOR DAIS MOUNTING. DO NOT INSTALL OR MOUNT ON CURB OR DAIS BASE. INSUFFICIENT COMBUSTION AIR SUPPLY.

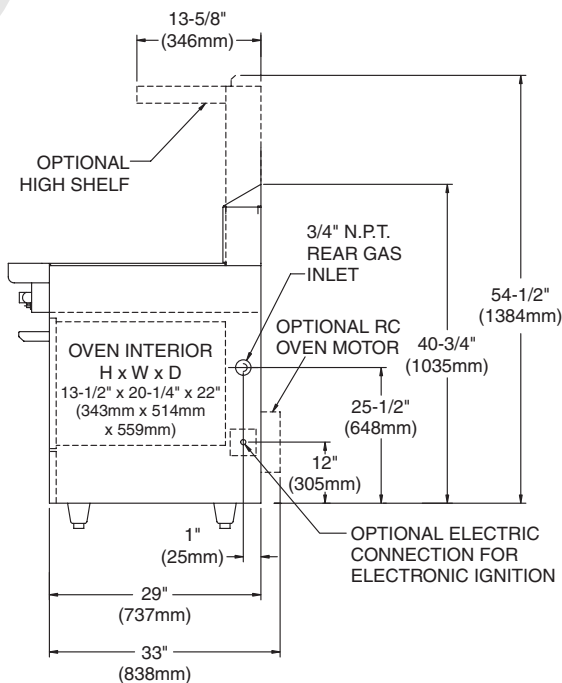
Clearances				Ship Wt.	
Installation		Entry			
Sides	Rear	Crated	Uncrated	Lbs.	Kg
6" (152mm)	6" (152mm)	46" (1168mm)	34" (864mm)	700	318

Suffix "E" models direct connection 120 Volt provided.

Equipment not installed to manufacturer's details or installed by unauthorized persons may void warranty.

NOTE: Installation clearance reductions are applicable only where local codes permit.

This product is not approved for residential use.



Continuous product improvement is a Garland policy.

Printed in USA

Specifications and design are subject to change without notice.

Form # S288 (05/05)